

Awards for Planning Excellence

Western Australia



20 AWARDS FOR
23 Planning
Excellence

Western Australia

PLANNING INSTITUTE
OF AUSTRALIA



Contents

03
Contents

| | |
|---|----|
| Message from the Awards Convenor | 04 |
| Message from the President | 05 |
| 2023 PIA WA Award Sponsors | 06 |
| 2023 PIA WA Judging Panel | 07 |
| Award Winners & Commendations | 09 |
| Secondary Student Project | 10 |
| Tertiary Student Project | 11 |
| Eric Lumsden Award for Academic Merit - Governance in Planning | 12 |
| Young Planner of the Year | 13 |
| Planning Champion | 14 |
| Great Place | 15 |
| Strategic Planning Project | 17 |
| Improving Planning Processes | 19 |
| Climate Change & Resilience | 21 |
| Stakeholder Engagement | 22 |
| Community Wellbeing & Diversity | 24 |
| Planning with Country | 25 |
| Technology & Digital Innovation | 26 |
| Planning Research | 27 |
| Small Consultancy of the Year | 28 |
| Large Consultancy of the Year | 29 |
| Local Government Team (Band 1) | 30 |
| Local Government Team (Band 2-4) | 31 |
| Outstanding Regional Project | 32 |
| Outstanding Leadership and Service | 34 |
| President's Award | 35 |
| Minister's Award | 36 |

Convenor

Message from the Awards Convenor

04

Message from the Awards Convenor

With so much going on in the world, changes in society and the constant growth of demands on our lives, it got me thinking about the purpose of this evening and the question of why we have awards. But to answer that, I considered a preliminary question: why do we have planning and planners? With disruptive technologies, AI, and rapid change that is almost impossible to keep up with, is it still relevant?

If this audience does not know why we need planners and planning, I am concerned and bemused, however, for everyone's benefit, here is a nutshell of where my philosophically pondering got me:

Town Planners are just what the title suggests: professional individuals who plan the shaping of cities, towns, and regions with the management of private, government, and commercial infrastructure developments, and help solve numerous competing issues.

As cities and towns continue to evolve and expand, town planning grows in importance. Yet as a profession, it is an often-overlooked aspect of building a well-functioning society. Let's face it: when developing a city, town planners are the unsung heroes, and the competing issues are complex and often divisive. If only it was as simple as ensuring a panel beater is not located next to residential homes. Could AI take on the role? Overall, I would have to say it's unlikely. Rigid statutory assessments - possibly yes, the decision of said assessment - well that depends; there are aspects of community and political that can make the decision not so obvious. What about structure planning on zoned land - yes, ah but then

structure plans such as one (which shall not be named) in the hills demonstrates, possibly no. Again, communities i.e., people, want to have a say in what happens around them.

That concluded that, yes, planning and planners remain essential to us as a social system.

And that brings me back to my original question - why have planning awards? Again, I hope this is now self-apparent.

If we accept what has been stated that planning continues to grow in importance, and town planners and their work are the overlooked and unsung heroes, then, of course, we need awards. It is our way of giving one another a pat on the back and saying well done, what you do is important - to everyone, even the nay-sayers, knockers, and road-blockers.

Thank you for being here and for all that you do.

I'm extremely excited to announce that 2023 has yet again set a record for the number of award nominations, and the gala event has attracted a higher number of attendees than in recent years. Well done to all of you and thank you for coming; it is wonderful to see that you, too, recognise the importance of what we do as a profession and the

need to award the outstanding efforts of individuals and teams in what is a tough environment.

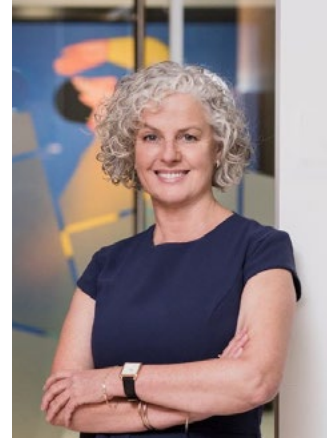
Given the growing number of entries and attendees, I would like to thank our sponsors who make these awards possible - Lavan, the WA Planning Commission, Development WA, SLR, Urbis, DPLH and Curtin University.

In 2024 PIA is striving to have each category sponsored, so please get behind the initiative so we can have an even bigger and brighter event next year.

Finally thank you to the Awards Judges. It takes a lot of time and consideration to assess, deliberate, sometimes negotiate, and agree, especially when there are so many nominations of such high quality.

Megan Adair MPIA

Awards for Planning Excellence Convenor



Megan Adair MPIA

President

Message from the President

05
Message from the President

The WA Awards for Planning Excellence program recognises and celebrates individuals, teams, and community groups for their outstanding achievements in, innovation, leadership, excellence, and dedication to sound planning practices. Over the years, we have expanded our award categories, and this year is no exception with the addition of the new Regional Project category. This new category reaffirms PIA's commitment to supporting regional initiatives and recognising the outstanding work carried out in these areas.

I am delighted to announce that this year has been our most significant to date, with a record 64 nominations and an increased number of tickets sold for our Gala Dinner, which promises to be another exceptional evening. I would also like to extend my gratitude to the many individuals and organisations who dedicated their time to submit nominations for this year's awards.

The success of the Awards program relies on the contributions of numerous stakeholders, including the substantial effort put forth by entrants in preparing their submissions, the dedication of our esteemed judges, the support of our sponsors, and the invaluable role played by our Awards Convenor, Megan Adair MPIA. I extend my heartfelt thanks to all of you for your time, enthusiasm, and commitment to this valuable program.

Congratulations to all the Award for Excellence winners and Commendation recipients on your remarkable achievements. I wish you the best of luck for the 2024 National Awards for Planning Excellence.

Amanda Sheers MPIA



*Amanda Sheers MPIA
PIA WA State President*



We're Making Sustainability Happen

Scan the QR code to find out how



2023 PIA Western Australia Award Sponsors

PLATINUM SPONSOR



GOLD SPONSOR



SILVER SPONSOR



BRONZE SPONSOR



CATEGORY SPONSORS



Department of Planning,
Lands and Heritage



2023 PIA Western Australia Judging Panel

07 JUDGING PANEL

2023 PIA Western Australia Judging Panel

Welcome to the 2023 PIA WA Awards for Planning Excellence. The Awards are an opportunity to share achievements and celebrate the value planning brings to our communities. They are a chance to showcase leading practice across a range of planning disciplines and sectors and to publicly recognise commitment to advancing the planning profession.



Daniel Arndt MPIA (Fellow)



Dr Francesca Perugia PIA (Assoc.)



Sue Woolhouse MPIA (Fellow)



Andrew Dover MPIA



Simon O'Hara RPIA



Dr Shohreh Nematollahi PIA (Assoc.)



Shelley Shepherd MPIA (Fellow)



Stephen Hiller MPIA (Fellow)



Brett Wood-Gush RPIA (Fellow)

2023 PIA Western Australia Judging Panel



Gareth Glanville



Anna Kelderman RPIA (Fellow)



Mathew Selby MPIA (Fellow)

Eric Lumsden Award Judges



Kathy Bonus RPIA (Fellow)



Cameron Lecky MPIA



Peter Wittkuhn



Alice Pryse

Award Winners & Commendations

2023

Secondary Student Project

AWARD TO

YITI ZHANG, JAMES WILLIAMS, MAJED IDRIS, XIXI WANG, ANNELIESE STEBER - BOB HAWKE COLLEGE

PROJECT

BUILDING A MORE SUSTAINABLE FUTURE

The clear task set for this project gave the students freedom to explore important planning concepts and create a community of the future that contains all the necessary elements of urban planning, with a few bits of fun thrown in too. This is a great example of how to get the next generation engaged and excited in thinking about how our future communities should be planned..

10 Secondary Student Project

HASS: INTERDISCIPLINARY PROJECT

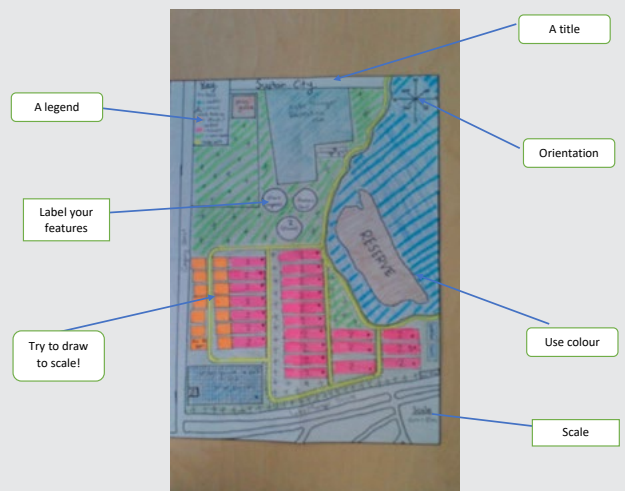
GEOGRAPHY TERM 3 2023



BUILDING A MORE SUSTAINABLE FUTURE

Task 2: Designing your suburb

You will need to produce an A3 design of your suburb. The first step is to do a draft, then you must submit a neat final copy. Here's an example from last year (of a different site). I will need to see all the elements listed below in your final design.



Category Sponsor



Tertiary Student Project

COMMENDATION

BECKY RUYIN LIAO,
YUN SHU WONG, WILL
JACOBSON, DAMIEN
LOCKYER, ASHLEIGH
SANTICH – CURTIN
UNIVERSITY

PROJECT

MELBOURNE, EDGARS
RD / MAIN STREET
URBAN REGENERATION
PLAN

This project demonstrates the value in multi-disciplinary teamwork. The students demonstrated an ability to leverage their diverse knowledge and skills, spanning planning, architecture, and property, bringing together their insights in addressing the complex challenge of regeneration within the built environment.

The regeneration masterplan and strategies create a precinct planning outcome that addresses the social, environmental, and economic needs of Thomastown and is implementable and transferrable to other precincts and projects.

The success of the project is an exemplar for encouraging fellow students in the built environment disciplines to stretch beyond their comfort zones. Their dedication to cultivating shared language and working together serves as an inspiration for other future professionals.

Edgars Rd / Main Street Hub, Melbourne

Thomastown 3074

The site is in Thomastown, a 'middle ring' suburb approximately 15km north of the Melbourne CBD. Significant cultural diversity in the area reflects the suburb's post-war manufacturing origins as does the predominantly low-rise, low-density housing. Locally, there are pockets of social and economic deprivation. The Edgars Road shopping centre is the economic base of the Hub. It is 1.3km from Thomastown station. Extensive community services (schools, recreation facilities, open space) are located along Main Street. The 357 bus runs along Main Street and Edgars Road, connecting the shopping centre to the train station. The Edgars Creek Trail provides an important active transport connection. The Hub has been chosen as a site for this competition due to its potential to become a 20-minute neighbourhood. The aim for the site is to: Create a welcoming, sustainable and resilient, 'Hub' precinct with safe and easy

access, to serve as a destination of choice in the local area via;

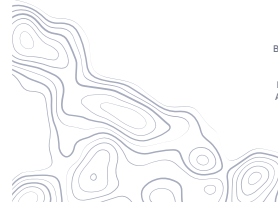
- *Reinvigorating the local shopping centre and surrounding public spaces through sustainable design, built form and destination mix, creating a distinct 'place' identity that caters to all ages, cultural backgrounds and abilities and acts as a drawcard for locals.*
- *Building safe and accessible active transport connections to the broader area including Thomastown Station.*
- *Exploring opportunities to sustainably diversify the housing stock to support the viability of the precinct while protecting the preferred neighbourhood character.*
- *Incorporating local Aboriginal cultural values into the environmental planning for the Edgars Creek area.*



THOMASTOWN REGENERATION PROJECT

Green and Thriving Neighbourhood
URDE3002 - Urban Regeneration

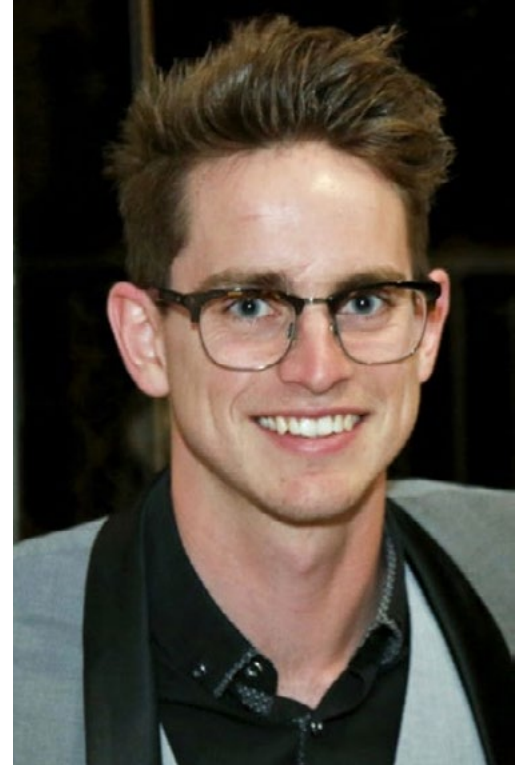
Becky Ru Yin Liao (20159283)
Yun Shu Wong (21269633)
Will Jacobson (20558217)
Damien Lockyer (20603175)
Ashleigh Santich (20342591)



Eric Lumsden Award for Academic Merit - Governance in Planning

AWARD TO
LIAM HERZFELD -
CURTIN UNIVERSITY

Liam has demonstrated a remarkably high standard of academic performance in his studies to date. His review and comparison of Western Australia and Northern Territory's governance framework was thorough, logical, and drew sound conclusions. Liam exhibits a clear understanding of the Western Australian governance framework, and his written work shows strong literacy skills. The panel was pleased to learn that Liam is already working in the planning profession and can see him enjoying a long and successful career in planning. .



Young Planner of the Year

COMMENDATION EMILY CROSBY PIA (ASSOC.)

Emily is a capable and active young planner who is active in her professional workplace, the PIA YP Network and providing valuable input into the Divisional PIA Policy and Advocacy Committee.

13

Young Planner of the Year

Emily is also making a positive contribution to advancing planning within her local government team through her work preparing an innovative draft Local Planning Policy on Sustainable Development which complements the R-Codes and the National Construction Code.



Category Sponsor



Department of Planning,
Lands and Heritage



Planning Champion

AWARD TO MARION FULKER AM

Although not a planner by qualification, Marion is and always has been an advocate of good planning and great outcomes. Marion has been a contributor and participant in better long-term planning for infrastructure, and a tireless advocate for the provision of quality research to inform policy and decisions regarding the City and its future. Her ability to navigate political and technical settings backed by solid data has resulted in the adoption and implementation of many great ideas. Marion has been a tireless champion for Perth urbanism and a key part of shaping the conversation about Perth's future for more than twenty years.



Great Place

Great Place

AWARD TO

RAC, TOWN OF PORT
HEDLAND, SHIRE OF
TRAYNING AND TOWN
TEAM MOVEMENT

PROJECT

CO-DESIGNING AND
CO-CREATING PUBLIC
PLACES WITH YOUNG
PEOPLE

From a community building project to an unexpected great place, this nomination has been able to deliver a spark of pride and a true sense of place through community involvement. The enduring pedestrianisation of a previously hot and car dominated space is a testament to how valued the space has become.

The project has also built capacity by teaching through doing; how to identify the right place, project planning and budgeting, pitching ideas and then implementing the plan. Those involved have developed lifelong skills in place planning and delivery, as well as collaboration and negotiation.

The project creates something different for the community; creating an attractive and inspiring place built from the grit and motivation of young people to give back to their neighbourhood, their families and their Elders. The project is repeatable, transferrable and develops a can-do attitude amongst those involved.

Category Sponsor



Great Place

COMMENDATION SHIRE OF BEVERLEY

PROJECT VINCENT STREET - STREETSCAPE PROJECT

The Shire of Beverley's Vincent Street, Beverley – Streetscape Project has met the project vision and intent, delivering an accessible and functional precinct that showcases cultural uniqueness, encourages economic growth and tourism and enhances liveability.

16

Great Place

The project has created a great place out of the historical parts, helping to accentuate the urban quality of the town of Beverley. It sets the scene for new investment and activation.



Category Sponsor



Strategic Planning Project

AWARD TO
SOUTHERN PORTS
AUTHORITY

PROJECT
STRATEGIC PORT MASTER
PLAN HAT-TRICK

This strategic project was undertaken contemporaneously for the ports of Esperance, Albany and Bunbury within an overall framework. The Plans were comprehensive and consistent in their approach, addressing a wide range of multifaceted business, operational and infrastructure factors. Forecasts relating to the implications of future change predicted on trade, logistics, transportation, energy, technology and for the climate on working ports was an integral part of the Plan, given the important role ports play in the State's investment strategy and on local and regional economies. The Plans are considered to be a new approach to port planning and set a new benchmark within Australia.

17
Strategic Planning Project



Category Sponsor



Strategic Planning Project

COMMENDATION

KARLKA NYIYAPARLI
ABORIGINAL
CORPORATION,
JAMUKURNU
YAPALIKURNU
ABORIGINAL
CORPORATION,
PUNTUKURNU
ABORIGINAL MEDICAL
SERVICE, CREATING
COMMUNITIES AND
HAMES SHARLEY

collaborations, it offers an inclusive and culturally sensitive plan. This ground-breaking project sets the standard for community-driven initiatives, showcasing the power of First Nations leadership and collaboration. It is a model for effective cooperation, emphasizing lasting positive change and inspiring future endeavours.



PROJECT

EAST NEWMAN PRECINCT
STRUCTURE PLAN

The Home in East Newman Precinct Structure Plan (ENPSP) is an exemplary project, co-designed with Nyiyaparli, Martu, Newman stakeholders, and East Newman residents. Addressing housing, wellbeing, and accessibility, it tackles acute social disadvantages faced by East Newman residents. Empowering Traditional Owners and community members throughout the process, the ENPSP stands as a beacon of collaboration and community-driven change. With over 54 engagement initiatives, 400 interactions, and artist

Category Sponsor



Improving Planning Processes

AWARD TO CITY OF SUBIACO

PROJECT

THE PRE-LODGE-
MENT PUBLIC
CONSULTATION
CONCESSION IN LOCAL
PLANNING POLICY 7.2 -
REDUCING, REFUNDING
AND WAIVING PLANNING
FEES

The City of Subiaco has taken a fresh approach to the community consultation component of their planning process by incentivising the applicant to consult with their neighbours before lodging the development application. This is a simple, transferable initiative which encourages grass roots consultation and has the added benefits of shortening processing times. It provides the opportunity for the applicant to alter the plans as a result of the consultation even before an application is made, smoothing the process for all.

The City of Subiaco is a deserving winner as they not only improved their processes, but committed their resources to this initiative by providing a 25% discount on fees.



Improving Planning Processes

20

Improving Planning Processes

COMMENDATION
WESTERN AUSTRALIAN
PLANNING COMMISSION
SUPPORTED BY THE
DEPARTMENT OF
PLANNING, LANDS AND
HERITAGE

PROJECT
SAFER PLACES BY DESIGN -
CPTED GUIDELINES

The Western Australian Planning Commission has reinvigorated the statewide approach to Crime Prevention Through Environmental Design by producing a best practice, performance based guide which builds on the established CPTED principles. This supports safer urban design outcomes whilst allowing innovative responses which address changing crime risk levels. The Guide promotes an holistic process to support well-designed and integrated safer outcomes for the public by replacing aged guidelines which

were no longer fit for purpose. With this document, WAPC has brought CPTED back into relevancy and consistent with contemporary planning.



Climate Change & Resilience

AWARD TO
CITY OF VINCENT &
CERCLOS

PROJECT
ENVIRONMENTALLY
SUSTAINABLE DESIGN
OF SINGLE HOUSES AND
GROUPED DWELLINGS

This project demonstrates effective collaboration between government and the private sector to address climate change challenges at the development-scale in an affordable and accessible way. The Rapid Life Cycle Assessment app, which calculates life cycle carbon and water impacts of low to medium-density residential buildings, is an innovative and cost effective way to support the delivery of the City's built-form policy objectives. Its application has resulted in tangible outcomes that have improved the performance of smaller-scale and lower value developments.



Stakeholder Engagement

AWARD TO
CITY OF KWINANA AND
RAC

PROJECT
WELLARD VILLAGE 7 DAY
MAKEOVER

This award recognises the innovative, collaborative approach taken by the City of Kwinana, in partnership with the team from RAC Reconnect WA, and facilitated by David Engwicht, to inspire the local community to collectively reimagine and revitalise the Wellard Village neighbourhood centre.

The project demonstrates how local residents can be empowered to transform their neighbourhood, using a dynamic, fast paced, enjoyable and action-oriented approach, engaging people of all walks of life to get involved and make significant changes to an area. It also has provided a catalyst for Kwinana to build strong and enduring relationships with its community. Significantly the seven-day makeover project has fostered inter-generational connections with a sense of shared ownership and identity in the Wellard Village neighbourhood centre.



Stakeholder Engagement

COMMENDATION
CREATING
COMMUNITIES, MEGARA
PROPERTY, MJA STUDIO,
PLANNING SOLUTIONS

PROJECT
SHAPING SORRENTO
PLAZA - TURNING
NAY INTO YAY!
THROUGH AUTHENTIC
ENGAGEMENT

23

Stakeholder Engagement

The judges commend Creating Communities, Megara Property, MJA Studio and Planning Solutions on their proactive bespoke and comprehensive communications and engagement with the Sorrento community. The approach of bringing people together and building positive relationships has resulted in a project which better reflect local aspirations for this landmark site.



Community Wellbeing & Diversity

AWARD TO

RAC, TOWN OF PORT HEDLAND, SHIRE OF TRAYNING AND TOWN TEAM MOVEMENT

PROJECT

CO-DESIGNING AND CO-CREATING PUBLIC PLACES WITH YOUNG PEOPLE

This project is an inspiration to regional communities struggling to entertain and retain young people and marginalised communities; placing youth in the centre of community and decision making to build meaningful civic engagement.

This project illustrates how centering everyday people can deliver outstanding and lasting social outcomes for the community.

The health and wellbeing benefits of an engaged youth in the community cannot be underestimated in the overall health and wellbeing of a community, longer term retention of families, and safe, secure places. The project sees youth from predominantly Indigenous background at the centre, delivering tangible long-term outcomes through co-design and co-delivery, and providing a springboard to ongoing volunteerism, community leadership and ownership of place.



Planning with Country

25

Planning with Country

AWARD TO

KARLKA NYIYAPARLI
ABORIGINAL
CORPORATION,
JAMUKURNU
YAPALIKURNU
ABORIGINAL
CORPORATION,
PUNTUKURNU
ABORIGINAL MEDICAL
SERVICE, CREATING
COMMUNITIES AND
HAMES SHARLEY

PROJECT

EAST NEWMAN PRECINCT
STRUCTURE PLAN

The East Newman Precinct Structure Plan is an innovative approach, led by Niyiyaparli and Martu to improve health, wellbeing and educational outcomes of residents living in East Newman through investment into families, amenities and housing.

Co-designed by Karlka Niyiyaparli Aboriginal Corporation, Jamukurnu Yapalikurnu Aboriginal Corporation and Puntukurnu Aboriginal Medical Service, the plan is designed

by the people, for the people – people who have walked this country for 60,000 years.

The judges were impressed with how the team worked to respect the community, from the engagement design through community activations, workshops, artist studios, community gatherings, and co-design planning sessions.

By doing this, they have created the template for a safer, more inclusive community for future generations where all can benefit from better health, wellbeing, education and employment opportunities.

Category Sponsor



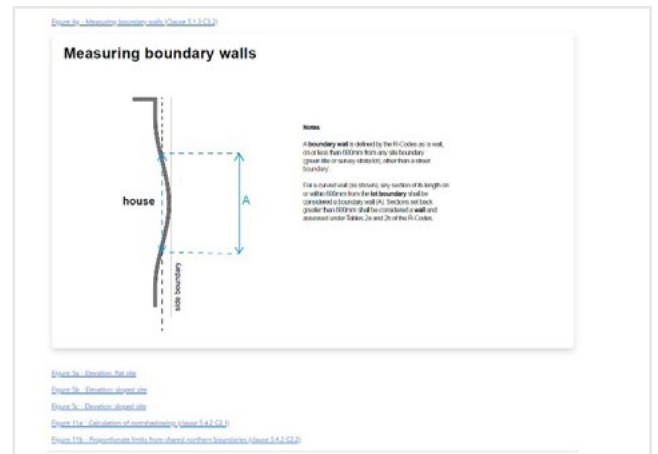
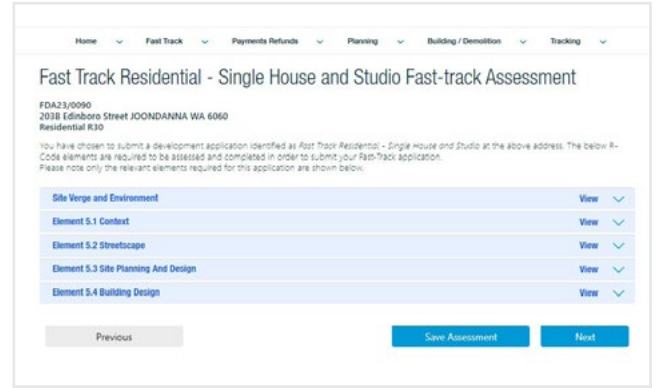
Technology & Digital Innovation

AWARD TO
CITY OF STIRLING

PROJECT
STIRLING FAST-TRACK
(DEVELOPMENT
APPLICATIONS)

The City of Stirling “Fast Track” Development Applications assessment tool is an innovative digital platform which aligns with the State Government’s planning reform agenda to modernise and streamline development assessment across Western Australia. The tool was developed to deliver a customer-centric approach that creates a streamlined online development assessment process while ensuring high-quality residential development. It shows how a local government can implement a successful digital transformation which is easily replicable for other jurisdictions..

26 Technology & Digital Innovation



Category Sponsor



Home Fast Track Payments Refunds Planning Building Tracking

1.0 THE GARDEN

[show/hide context](#)

1.1 Private Open Space

DEEMED-TO-COMPLY
Development satisfies the following deemed-to-comply requirements.

Primary garden area - single houses and grouped dwellings only.

C1.1.1 For single houses and grouped dwellings, a single consolidated primary garden area provided behind the primary street setback, in accordance with Table 1.1a

Table 1.1a Primary garden area requirements

| Site area (m ²) | Minimum primary garden area (m ² per dwelling) | Maximum permanent roof cover | Minimum dimension |
|-----------------------------|---|---|-----------------------------|
| 191-220 | Enter minimum garden area | One-third of the primary garden area provided | Enter minimum dimension (m) |

APPLICANT RESPONSE

Site area (m²)
191-220

Minimum primary garden area (m² per dwelling)
Enter minimum garden area

Site area (m²)
One-third of the primary garden area provided

Minimum dimension
Enter minimum dimension (m)

Figure 1.1a Primary garden area minimum dimensions

Planning Research

AWARD TO

SARAH FOSTER (RMIT),
PAULA HOOPER (UWA),
ALEXANDRA KLEEMAN
(RMIT), CLOVER
MAITLAND (UWA) AND
JULIAN BOLLETER
(UWA)

PROJECT

THE HIGH LIFE
STUDY: THE POLICY
AND PRACTICE
OF DESIGNING
HEALTHY EQUITABLE
APARTMENTS

27

Planning Research

The HIGH LIFE Study, guided by a stakeholder panel including architects and urban designers, assessed compliance of apartment design with state policies in Sydney and pre-existing policies in Perth and Melbourne. The outcome of this review provides a framework for including health-enhancing design principles when implementing apartment design policies across Australia. This research underscores the pivotal role of design quality and policy in enhancing public health and well-being, constituting a noteworthy stride towards more comprehensive and well-being-oriented urban environments.



Small Consultancy of the Year

AWARD TO NICHE PLANNING STUDIO, WA OFFICE

Niche Studio is a small consultancy firm, established in Western Australia in 2012. Niche Studio prides itself on the workplace that it has created, supportive and diverse. The team applies the same values to help service their broad client base. Niche has been working with award winning developers right down to assisting the smallest of their clients with their plans, ensuring that these outcomes are sustainable and ultimately making a difference. Niche has a strong local community focus, using these to develop plans that are responsive to current and future community needs. Niche has undertaken work across a broad field, preparing supporting planning documentation across a broad spectrum of areas, such as, creating structure plans, preparing scheme amendments at a regional level and level, designing, and redesigning subdivisions and preparing development applications. Niche have also assisted Local Government in delivering on its community planning processes.



Large Consultancy of the Year

AWARD TO URBIS

Urbis has a clear mission – to shape cities and communities for a better future. In order to achieve this, it creates an environment where staff are supported. It provides the resources to enable its people to learn through formal training as well as experimentation. It provides a flexible workplace. Urbis is a national company and utilizes the resources and experiences of its interstate offices to produce creative solutions. Apart from Planning, Urbis exercises its social conscience in the broader community by supporting diversity, inclusiveness and acceptance.

29 Large Consultancy of the Year



Local Government Team (Band 1)

AWARD TO CITY OF STIRLING - DEVELOPMENT SERVICES PLANNING TEAM

This award is awarded to the City of Stirling's Development Services – Planning team to acknowledge the hard work, dedication, and innovation the team has shown in providing a modern and streamlined planning service.

In addition to being responsive to the State Government's planning reform agenda, the City of Stirling Development Services Planning Team provides a benchmark in how local government can work with industry to implement meaningful local planning reform and simultaneously deliver professional development opportunities for the planners.

The City demonstrated it continually engages in a comprehensive reform process to identify and implement improvements to benefit all its customers. The planning service team operates an agile structure with staff gaining experience and diversity through annual team rotations. The team also collaborates in multi-disciplinary teams to assess and determine complex planning matters and achieve high-quality planning outcomes.

30

Local Government Team (Band 1)



Local Government Team (Band 2-4)

AWARD TO SHIRE OF PINGELLY

The Shire of Pingelly has transformed its commitment to effective planning processes by applying a bottom-up educational approach to demonstrate the fantastic outcomes that can be achieved through a multi-disciplinary approach to strategic and statutory planning. This proactive approach has also reduced friction between the local government and development applicants and supported the delivery of outcomes in accordance with their contemporary planning framework.



The shift in attitudes towards planning as an asset rather than a liability by staff and Council that has been achieved through authentic engagement with the community has underpinned the delivery of tangible community benefits.



Outstanding Regional Project

AWARD TO
PLACE LAB AND SHIRE
OF ESPERANCE

PROJECT
JAMES STREET
PRECINCT

The James Street Precinct Plan will deliver a vibrant community, cultural and tourism hub near the CBD that links to the recently upgraded Esperance Foreshore and enhances the experiences of both locals and visitors alike.

Preparation of the plan included a very high level of involvement with the community which has resulted in a strategy that has strong support, addresses the identified needs and delivers a good outcome. The project has also built capacity within the Shire and community regarding planning and responding to community issues and engagement practices.

Category Sponsor



Outstanding Regional Project

COMMENDATION SHIRE OF BEVERLEY

PROJECT VINCENT STREET - STREETScape PROJECT

The Shire is a relatively small local government with a population of around 1700 people. The district of Beverley contains 95 historic sites, 18 of which are recorded on the State Register of Historic Places, with 10 of these located in Vincent Street. The project was based on extensively updating Vincent Street, the town's main road, by adopting an urban design approach to deliver engineering outcomes to enhance the quality and ambience of the town centre. The road and sidewalk treatments, signage and street furniture are of a high quality and complement and enhance the historic buildings and places that remain there today.

Category Sponsor



Outstanding Leadership and Service

AWARD TO JAKE SCHAPPER MPiA

Jake stands out from the crowd. He has consistently displayed exceptional leadership qualities, inspiring and motivating students to excel academically and personally. Jake's innovative teaching methods and mentorship have not only enriched the learning experiences of countless students but have also fostered an environment of intellectual curiosity and growth.

34 Outstanding Leadership and Service

He demonstrates a genuine concern for the well-being of students by taking on extra responsibility and caring for the people he leads. Through his contributions and the strong foundation, he provides his students, they can grow as professionals and in turn, become the leaders of the future. He has created a lasting legacy for the planning industry.



President's Award

AWARD TO
PLACE LAB AND SHIRE
OF ESPERANCE

PROJECT
JAMES STREET
PRECINCT-

The Esperance James Street Cultural Precinct Master Plan demonstrates exceptional and innovative regional planning that holistically addressed the unique needs and opportunities of this remote Western Australian community. Through an inclusive and iterative engagement process, the Shire of Esperance collaborated extensively with stakeholders to envision a vibrant, multifunctional hub integrating cultural attractions, public spaces, and businesses. The master plan links the town centre to the recently upgraded foreshore, enhancing experiential quality and community pride for locals while also attracting and retaining visitors.

A key strength of this regional project was the bespoke community engagement approach, tailored to the needs and aspirations of local residents. Innovative digital platforms combined with in-person outreach enabled broad participation across age groups and organisations, resulting in a high response rate of over 1,400 individuals.

With creativity, inclusiveness and sensitivity to regional identity, this project embodies exemplary planning tailored to local vision and landscape. The master plan's holistic integration of tourism, commerce, culture, recreation and municipal services sets a new standard for activating public spaces to serve diverse community needs.



Western Australia's Leaders in Planning & Environment Law

37

Minister's Award



Craig Wallace
Lead Partner
Planning & Environment



Paul McQueen
Partner and General Counsel
Planning & Environment



Alex McGlue
Special Counsel
Planning & Environment



Isabella Mosole
Associate
Planning & Environment



Jessica Pollock
Associate
Planning & Environment



Isabel Bartel
Solicitor
Planning & Environment

Lavan are leaders in planning & environment law in Western Australia, offering a comprehensive range of services that cover all aspects of land development and property transactions.

Lavan represents some of Western Australia's most significant landowners and property developers.



SHAPING THE FUTURE OF WESTERN AUSTRALIA

The
Western Australian Planning Commission
is pleased to be **Gold sponsor** of the
WA Awards for Planning Excellence 2023.

As the State continues to progress important planning reforms, this awards program is a valuable way to inspire new benchmarks that align with the Commission's mission to create better places for all Western Australians to live, work and recreate.

The Commission congratulates all this year's finalists and wishes everyone an enjoyable evening.

Commissioners would also like to take this opportunity to thank all of Western Australia's planners for their hard work and dedication to building better communities over the past year.



www.wapc.wa.gov.au





Planning
Institute
Australia

Planning Institute of Australia (PIA) is the national body representing planning and the planning profession. Through education, communication and professional development, PIA is the pivotal organisation serving and guiding thousands of planning professionals in their role of creating better communities.

PIA currently represents approximately 5300 members nationally and internationally, and connects with more than 10,500 planners annually. We are governed by a National Board of Directors and managed by a professional administration. We are a member-based organisation with its management complemented by volunteers, who support and contribute to our activities on various levels.

Our mission is to champion the role of planning in shaping Australia's future. PIA will do this through strong leadership, advocacy and contemporary planning education.

Our vision is for PIA to be Australia's trusted voice on Planning.